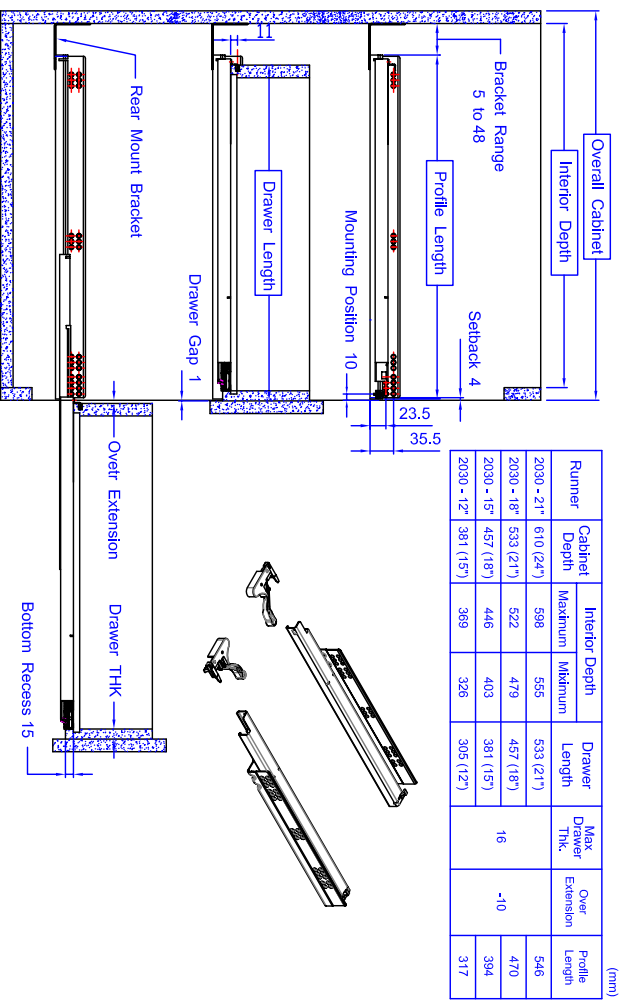
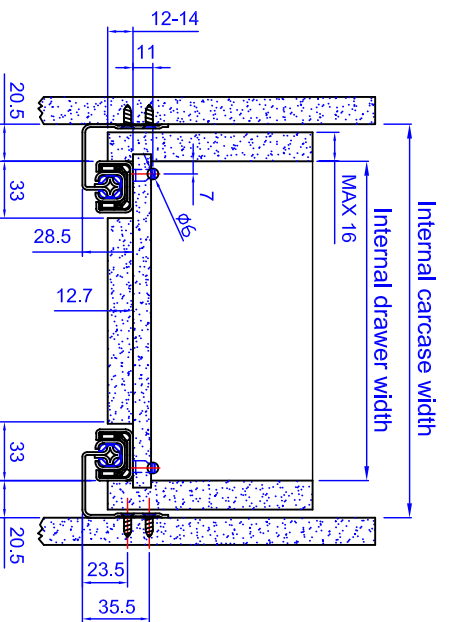


# 2030 Soft - closing function 2031 Self - closing function

## Concealed Side

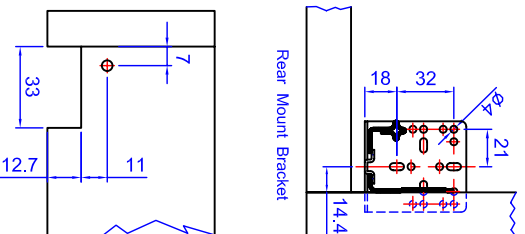


Internal drawer width=internal carcass width-41mm

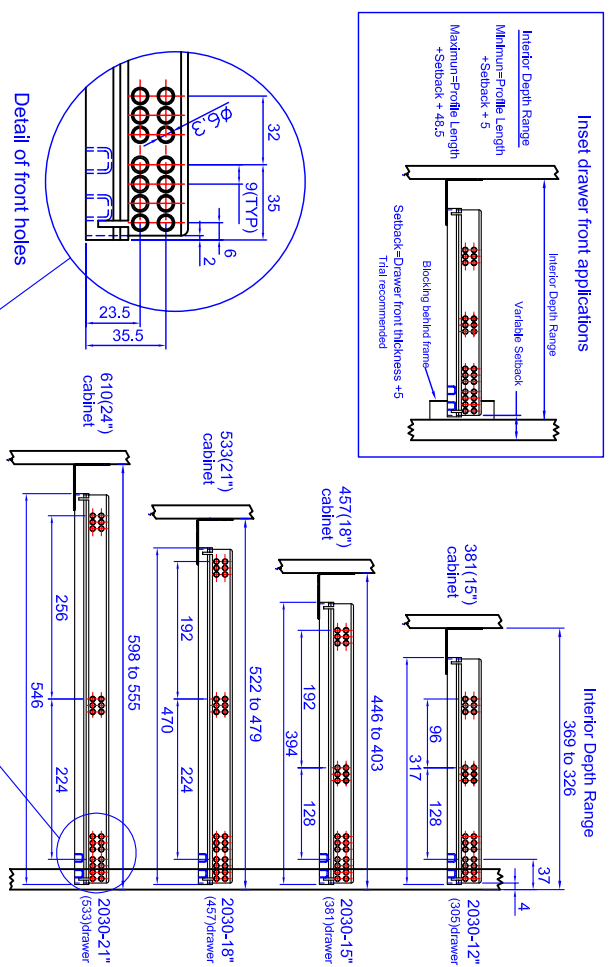


| How to calculate outside drawer width |                     |
|---------------------------------------|---------------------|
| If drawer side thickness is           | 16 (5/8") 13 (1/2") |
| Deduct from internal carcass width    | 10 (3/8") 16 (5/8") |

Example: For 21" internal carcass width and a 5/8" drawer material: 21" minus 3/8" = 20-5/8" drawer width



# Installation dimensions (mm)



## Drawer removal and installation

